



New Products!

Oil Bottle Trays

Trays mount to shop or trailer wall and measure 4-1/2" deep with a 2-3/4" tall front edge making them perfectly sized for holding most quart oil containers. Trays are fabricated from 1/8" thick aluminum and feature a white power coated finish.



Part No.	Description
ALL12265.....	16" Long Tray
ALL12268.....	21" Long Tray

Gear Tote Tray

ALL12269

Neatly organize up to 10 quick change gear tote boxes vertically. Tray is 21" long x 5-1/2" deep with a 4" tall front edge making them perfectly sized for gear tote boxes.



Holley Ultra HP Black Fuel Line

ALL26165

Designed for Holley dual feed carburetors, features braided -8 line with a -8AN inlet and -4AN fitting with cap for a fuel pressure gauge.



Black Aluminum Carb Fittings

Simplify plumbing of the fuel system and building custom fuel lines. Sold each. Sealing washer included.



Part No.	Description
ALL50902.....	Female -8AN End, Holley 7/8"-20
ALL50906.....	Male -8 End, Holley 7/8"-20
ALL50907.....	Male -8 Orb, Holley Ultra 3/4"-16

Tire Pressure Gauges, Glow In The Dark

Tire pressure gauge has a 2-1/4" diameter, glow in the dark face. Swivel chuck rotates 360 degrees on a 14" long rubber hose for easy placement on valve stems with leak free operation. A rubber cover surrounds the gauge for added protection against drops and has a ribbed molded pattern for increased grip. Gauge also features a built-in pressure release valve for removing air in small amounts for precise pressure adjustments. Tire gauge holder ALL12260 sold separately.



Part No. Description

ALL44056.....	0-15 PSI
ALL44057.....	0-30 PSI
ALL44058.....	0-60 PSI



ALL12260
(sold separately)

Universal Helmet Hook

ALL10223

Lightweight, steel universal helmet hook is 1/8" thick and has a radius mount for attaching to round tubing. Hook may be welded on or clamped to tube with a hose clamp.



1/4" Steel Brake Lines

Steel galvanized zinc coated lines with 7/16"-24 ends.

Part No. Description

ALL48064.....	8" Long
ALL48066.....	12" Long
ALL48068.....	20" Long
ALL48070.....	30" Long
ALL48072.....	40" Long
ALL48074.....	51" Long
ALL48076.....	60" Long
ALL48078.....	72" Long



finish line
RACING PRODUCTS
Williams Lake, BC
1-800-734-3805

www.finishline.ca



New Products!

5/8" Bent Tie Rod, 18" Long

NEW LONGER LENGTH

ALL57024



Typically used with factory style inner tie rod end and a rod end style outer. Tube is constructed of .160" wall tubing with 5/8"-18LH threads on the straight end and 5/8"-18RH threads on the curved end.

Wide 5 Aluminum Axle Tube, 25-5/8"

ALL68201



Aluminum axle tube has a 3" O.D., a 2.500" I.D., and is machined for spool seal ALL72140.

Axle Retainers For Ford 9"

Cut-To-Fit Flanged Axles

Axle retainers for large style bearings.



Part No. Description

ALL72316.....Late Torino Style

ALL72317.....Early Style

Universal Ford 9" Axle Housing Seal

ALL72099

Place seal inside the axle tube near the center section to keep rear end lube in the center section area of most floating axle style rear end housings. Universal seal works with most 3" O.D. axle tubes regardless of wall thickness. Internal seal diameter of .975" works with most 28 and 31 spline axles.



Medium Press-In Lower Ball Joint Sleeve

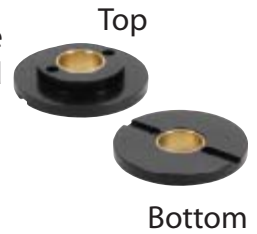
ALL56253

Steel sleeve allows custom fabrication of control arms. Fits Allstar ball joint ALL56212.



Bump Spring Cups

Lightweight bump spring cups are made from 6061 T6 aluminum and have a black anodized finish. Cups feature a bronze bushing allowing the shock shaft to move freely during suspension travel. Cups are sized for Hypercoil and most Landrum bump springs. Two are required and must match bump spring I.D. size to appropriate bump spring cup I.D. size from chart. Sold each.



Shaft Size	Cup Step ID		
	1.160"	1.200"	1.280"
14mm	ALL64348	ALL64349	ALL64350
1/2"	ALL64352	ALL64353	ALL64354
16mm, 5/8"	ALL64356	ALL64357	ALL64358

Notched Tube Mount Shock Brackets

Brackets are notched for 1-1/2" - 1-3/4"

round tubing to create a gusset style mount that welds on three sides.

Notched design positions the bracket perpendicular to the tubing at a 90 degree angle and

includes 1/2" shock mounting hardware.



Part No. Description

ALL60112.....Long Two Position (1" CTC)

ALL60113.....Extra Long Three Position (1" CTC)

Round Tube Mount Shock Bracket

ALL60115

Bracket welds onto round tubing and mounts parallel with tubing. Bracket is typically mounted above or below tubing and includes 1/2" shock mounting hardware. Three mounting positions are on 1" centers.



Visit www.allstarperformance.com for full product details and the latest updates!



New Products!

Wall Mount Radiator Holder Kit ALL12216

Brackets fasten to trailer wall and hold radiator safely in place during transit. 29" long aluminum brackets fit radiator cores up to 2-1/4" wide.



Quick Change Pinion Mount Double Sided/Double Cam ALL60289

Double cam designed adjuster provides easy adjustment of Panhard bar on rear end mount. Radiused slot eliminates the need to adjust length of the Panhard or J-bar.



Tire Gauge Holder ALL12260

Keep tire gauge conveniently located! Works with most gauges up to 4" O.D.



Shock Bump Rubbers

Conical shaped bump rubbers fit on most shock shafts up to 16mm to limit shock travel. Bump rubbers are 2-3/8" tall and have a 2" O.D. base. A letter designation is molded in the bottom to identify compound.



Part No.	Description
ALL64500.....	Soft (40 grams)
ALL64501.....	Medium (50 grams)
ALL64502.....	Hard (55 grams)

Aerosol Can Tray ALL12264

Secure to multiple locations of the shop or trailer walls to keep chemicals neatly organized. 16" long x 3-1/2" deep.



Steel Threaded Nut Insert

Insert installs into a 3/8" O.D. hole and has a 1/4"-20 coarse I.D. hole to fasten body panels or other accessories to.

Part No.	Description
ALL18547.....	2-Pack
ALL18547-10.....	10-Pack
ALL18547-50.....	50-Pack



Shop Towel Roll Holder ALL12219

Aluminum holder is 11" wide to hold most standard size towel rolls. A weighted plate keeps towels from unrolling when mounted to a trailer wall.



2 Piece Aluminum

Sprint Motor Plate With Bushings ALL38145

2 piece plate comes with bushings to allow for minimum engine flex and to help with weight transfer. Designed to work with ALL36092 and ALL36093 tank mounts.



Flywheel Locking Tool SB/BB Chevy ALL96426

Place onto rear block dowel pins to prevent the flywheel from turning while tightening or loosening bolts. Locking tool works with 153 or 168 tooth flywheels and flexplates.




finish line
RACING PRODUCTS
Williams Lake, BC
1-800-734-3805



New Products!

Slotted Upper Link Brackets ALL60152

1/4" thick aluminum bracket with 3/4" x 3" slot bolts to top of quick change to accept upper link. 1-pair.



Bolt-On Battery Box ALL76103

11" wide x 7" deep and includes 3/8" battery hold down hardware.



PTFE Lined Pro Series Rod Ends ALL58079-58086

Two-piece steel rod ends available in 1/2", 5/8" and 3/4" sizes.



Black Anodized Aluminum Carb Fittings ALL50902, 50906

Fittings convert Holley 7/8"-20 threads to a -8AN style connection. ALL50902 fitting with female -8AN or ALL50906 fitting with male -8AN end.



GM Caliper Bolts With 3/8 Allen Socket Head ALL42079

Built-in sleeve allows for extra caliper travel. 2-pack.



Black Anodized Bulkhead Fittings ALL50090-50109

A variety of fittings to simplify brake plumbing available in common -3AN and -4AN sizes.



ALL50108
90° Swivel



ALL50091
-4AN Union



ALL50096
-3AN Tee



ALL50099

Wheelie Bar Wheel Wrenches ALL11195-11197

Perfect for adjusting wheelie bar height! Three sizes available to fit 3/4", 15/16" or 1" jam nuts.



Bulkhead Mounting Tab ALL60093

Bolt mounting tab to the chassis or rear end to hold bulkhead fittings in place.



Inverted Flare Tee Fitting ALL50135

3/16" brass tee with 1/8"-27 male side port.



Fabrication Pencil ALL12064-12066

A must for marking lines during metal layout and fabrication. Choose ALL12064 3-pack or ALL12066 mechanical with six refills.



ALL12064



ALL12066

Visit www.allstarperformance.com for full product details and the latest updates!



New Products!

U-Joints

ALL69031-69036

Performance U-joints are greasable and fit a variety of driveshaft combinations.

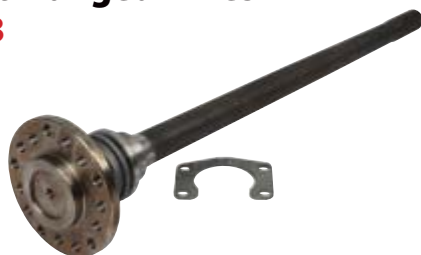


Part No:	Description
ALL69031.....	1330 Series
ALL69032.....	1350 Series
ALL69034.....	1310 to 1330 Series
ALL69035.....	1310 to 1350 Series
ALL69036.....	1330 to 1350 Series

Ford 9" Cut To Fit Flanged Axles

ALL67500-67503

Cut to fit axles for Ford 9" rear ends are a great alternative to custom axles for street, drag racing and circle track use.



Part No:	Description
ALL67500.....	Axle 31 Spline 29.5" Long
ALL67501.....	Axle w/ Bearing 31 Spline 29.5" Long
ALL67502.....	Axle 31 Spline 33" Long
ALL67503.....	Axle w/ Bearing 31 Spine 33" Long

Ford 9" Axle Bearing Assembly

ALL72315

Replacement rear axle bearing used in many Ford car and truck rear ends. Bearing measures 3.150" O.D. to fit into Big Ford (New Style) housing ends and has an I.D. of 1.565".



Street/Strip Distributors

ALL81252-81256

A great choice for street/strip applications, combining a performance distributor with the added benefit of an adjustable vacuum advance for normal street driving.



Part No:	Description
ALL81252.....	Ford V8 332-428 FE
ALL81254.....	Pontiac V8 326-455
ALL81256.....	AMC/Jeep V8 290-401

Shock Rack

ALL12212

Holds up to four units with or without coil over springs. Easily mounts to trailer, shop wall or pit cart.



Round Tank Brackets (Bottle Mounts)

ALL14402-14431

Hinged brackets are uniquely designed to simplify tank installation and removal.

Part No:	Description
ALL14402.....	Polished 1.525" Bracket
ALL14408.....	Polished 2.00" Bracket
ALL14414.....	Polished 4.00" Bracket
ALL14418.....	Polished 4.25" Bracket
ALL14422.....	Polished 4.375" Bracket
ALL14430.....	Polished 5.25" Bracket
ALL14403.....	Black 1.525" Bracket
ALL14409.....	Black 2.00" Bracket
ALL14415.....	Black 4.00" Bracket
ALL14419.....	Black 4.25" Bracket
ALL14423.....	Black 4.375" Bracket
ALL14431.....	Black 5.25" Bracket

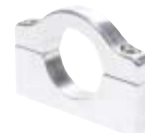


Chassis Brackets (Base Mounts)

ALL14450-14459

2-piece brackets clamp to chassis tubing and accept round tank brackets (ALL14402-14431).

Part No:	Description
ALL14450.....	Polished 1.00" Bracket
ALL14452.....	Polished 1.25" Bracket
ALL14454.....	Polished 1.50" Bracket
ALL14456.....	Polished 1.625" Bracket
ALL14458.....	Polished 1.725" Bracket
ALL14451.....	Black 1.00" Bracket
ALL14453.....	Black 1.25" Bracket
ALL14455.....	Black 1.50" Bracket
ALL14457.....	Black 1.625" Bracket
ALL14459.....	Black 1.725" Bracket




finish line
RACING PRODUCTS
Williams Lake, BC
1-800-734-3805

www.finishline.ca



New Products!

Black Access Panel Kits

ALL18540-18544

Kits include frame, access door, hinge and quick turn fasteners.



Part No: Door Opening Size

- ALL18540..... 6" x 6" Kit
- ALL18541..... 8" x 8" Kit
- ALL18542..... 6" x 14" Kit
- ALL18543..... 10" x 14" Kit
- ALL18544..... 14" x 14" Kit

Electrical Plugs

ALL76430-76436

Male recessed outlets commonly used for oil tank heaters.



Part No: Description

- ALL76430..... Outlet Only
- ALL76432..... Outlet With Wiring
- ALL76434..... Outlet With Cover
- ALL76436..... Outlet With Cover And Wiring



Brackets For Electrical Plugs

And Quick Disconnects

ALL60352-60353

Steel bracket mounts to the chassis providing a single convenient location to plug in an electrical plug and a battery quick disconnect.



Part No: Description

- ALL60352..... Weld-On Bracket
- ALL60353..... Bolt-On Bracket

Bracket For Quick Disconnects

ALL60350

Steel bracket mounts battery disconnect (ALL76320) to the bend on the underside of deck panels found on late models and modifieds.



4' x 10' Aluminum Vibrant Orange

ALL22244

Aluminum sheets are .040" thick.



Radius Climbing Pinion Mounts

For Quick Change

ALL60287-60288

Radiused slot eliminates the need to adjust length of the Panhard or J-bar. Double cam adjuster for easy movement.



ALL60287



ALL60288

Part No: Description

- ALL60287..... Single Sided Steel, Double Cam
- ALL60288..... Single Sided Aluminum, Double Cam

Pull Bar Covers

ALL60206-60208

Neoprene covers work well on 5" springs and pull bar applications.



Part No: Description

- ALL64206..... 6" x 7"
- ALL64207..... 6" x 14"
- ALL64208..... 6" x 16"

Aluminum Flat Spacers

ALL18740-18766

Flat spacers are great for shimming and adding additional clearance to brackets for brake calipers, power steering, alternators, dry sump pumps or just about anything to help with alignment issues. Package of 2.

Part No: Description

- ALL18740..... 3/8" I.D. x 1/8" Thick
- ALL18742..... 3/8" I.D. x 1/4" Thick
- ALL18744..... 3/8" I.D. x 3/8" Thick
- ALL18746..... 3/8" I.D. x 1/2" Thick
- ALL18760..... 1/2" I.D. x 1/8" Thick
- ALL18762..... 1/2" I.D. x 1/4" Thick
- ALL18764..... 1/2" I.D. x 3/8" Thick
- ALL18766..... 1/2" I.D. x 1/2" Thick



Visit www.allstarperformance.com for full product details and the latest updates!